



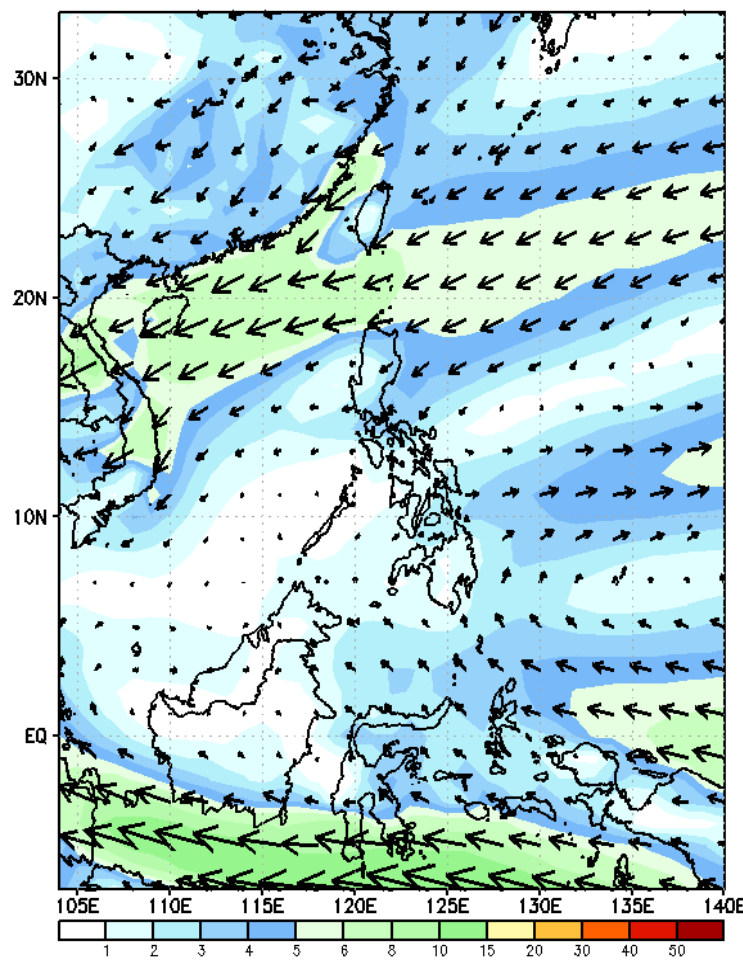
Week 1 & Week 2 Forecast for the Philippines using GEFS Model



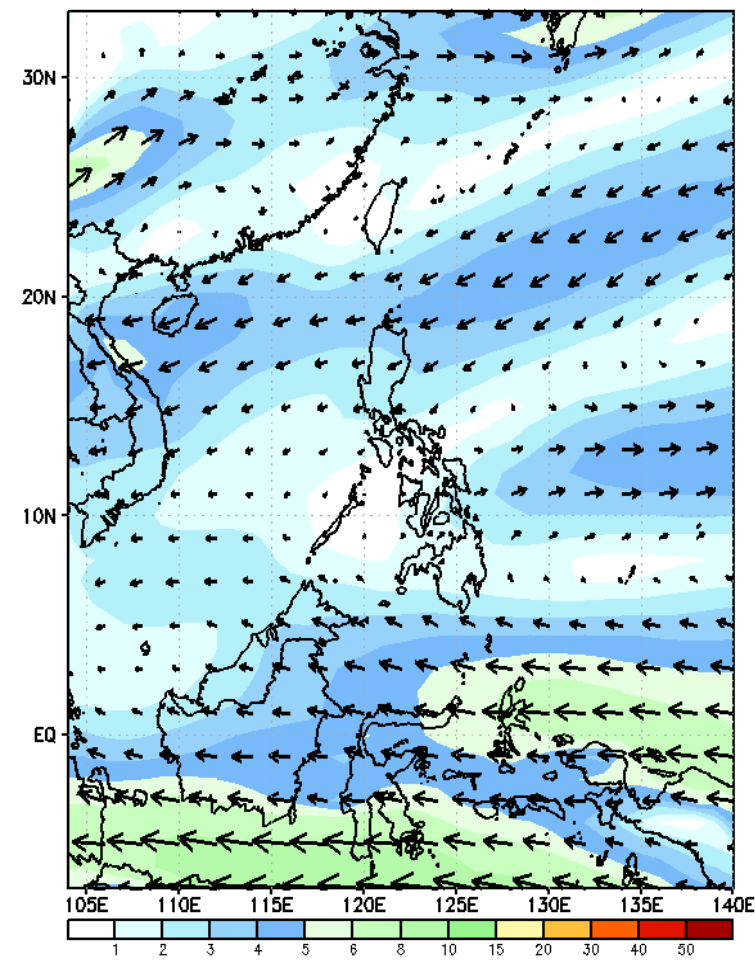
GEFS Week-1 Wind Forecasts:

Week 1: Oct 4-10, 2024

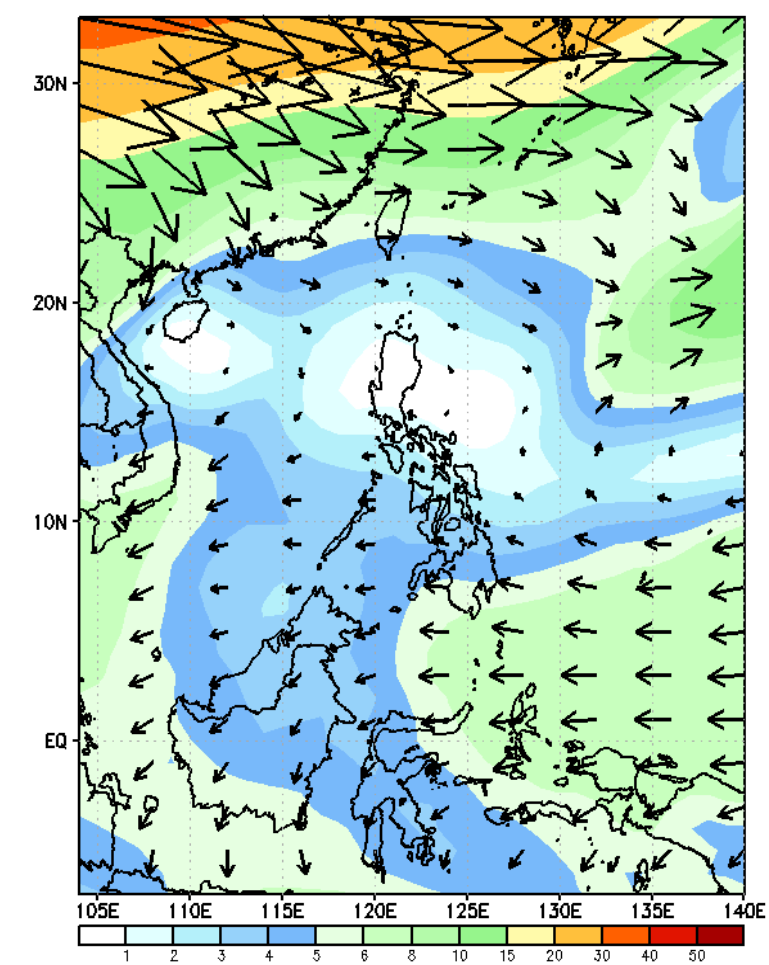
GEFS Week-1 850-hPa Wind Total
Valid: 20241004 - 20241010



GEFS Week-1 700-hPa Wind Total
Valid: 20241004 - 20241010

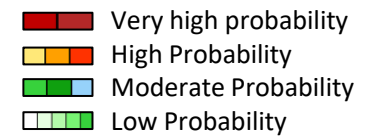


GEFS Week-1 200-hPa Wind Total
Valid: 20241004 - 20241010



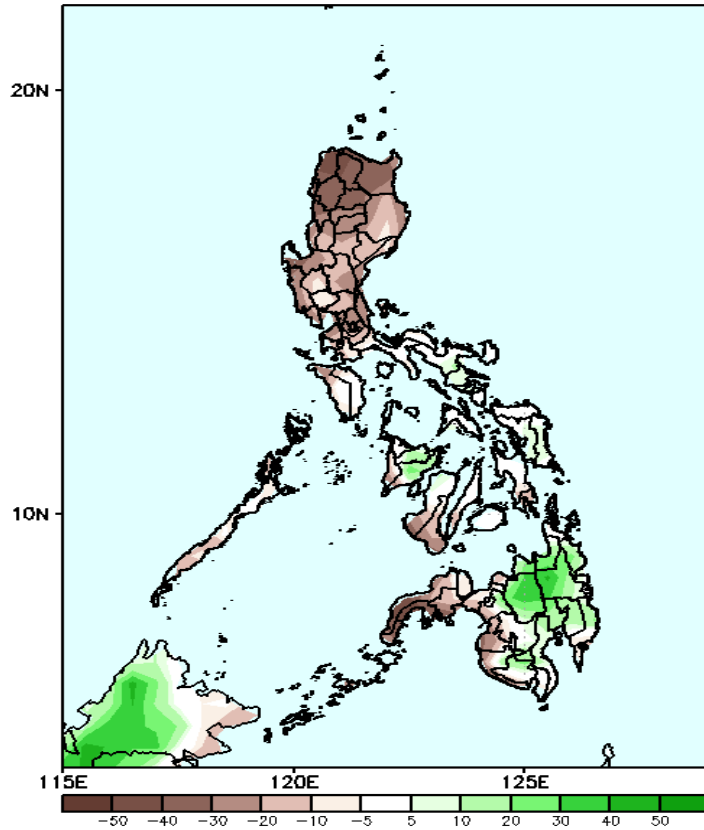
Easterlies affecting most parts of the country.

Precipitation Anomaly and Exceedance Probability > 25/50 mm

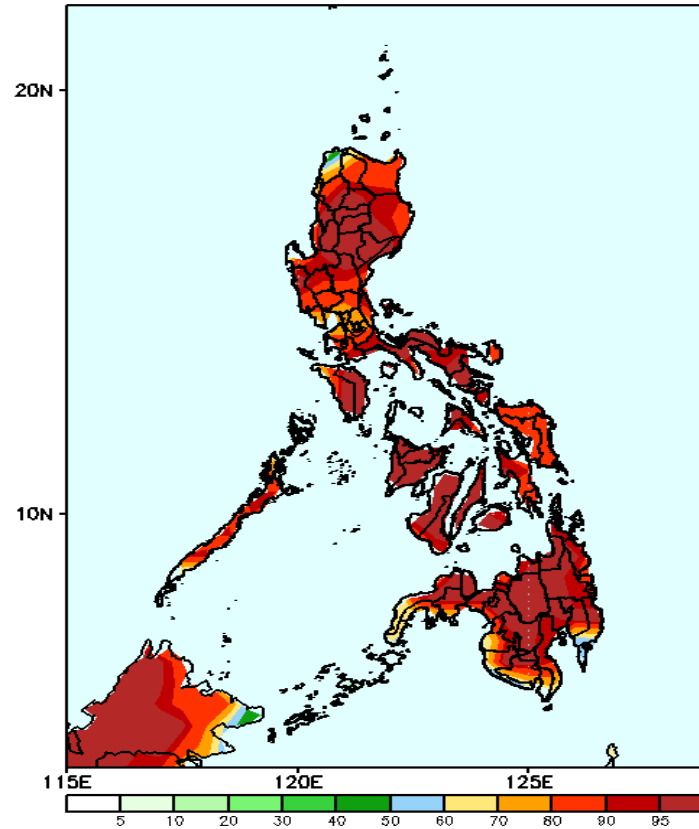


Week 1: Oct 4-10, 2024

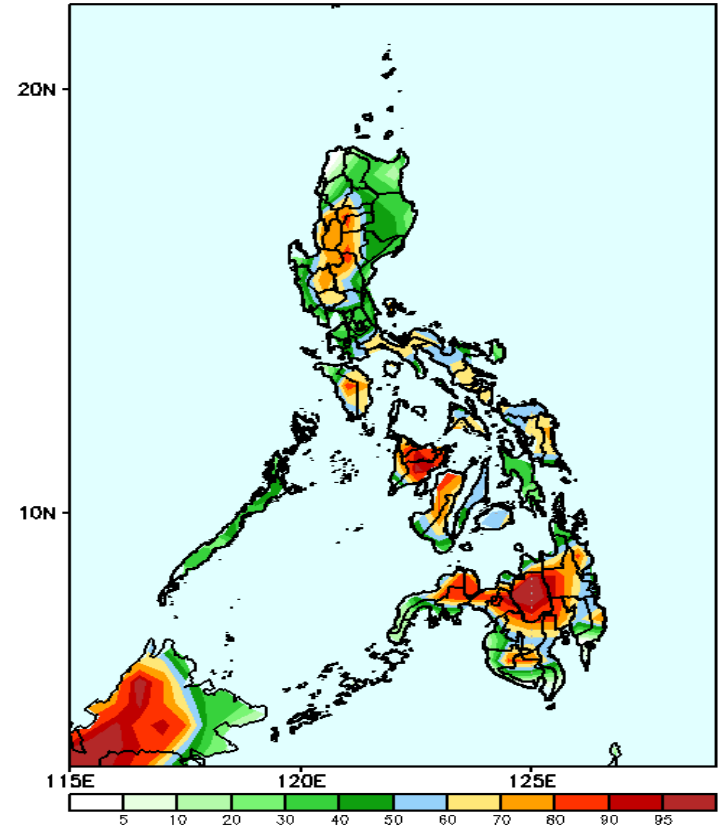
GEFS Week-1 Precip Anomaly
Valid: 20241004 - 20241010



GEFS Week-1 Exceedance Prob. > 25mm
Valid: 20241004 - 20241010



GEFS Week-1 Exceedance Prob. > 50mm
Valid: 20241004 - 20241010



Rainfall deficit of 20-60mm is likely in most parts of Luzon, Visayas and western Mindanao while increase of rainfall of 20-40mm is expected in eastern parts of Mindoro and the rest of Mindanao.

Probability to Exceed 25mm

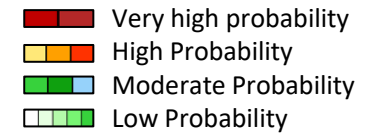
- High to very high over most parts of the country

Probability to Exceed 50mm

- Moderate to high over the southwestern part of Northern Luzon, Tarlac, Pampanga, Nueva Ecija, most of Bicol Region, Western and Central Visayas, NIR, Samar Provinces, and most parts of Mindanao;
- Low to moderate over the rest of Luzon, Leyte Provinces, western section of Zamboanga Peninsula and the southernmost part of Mindanao.

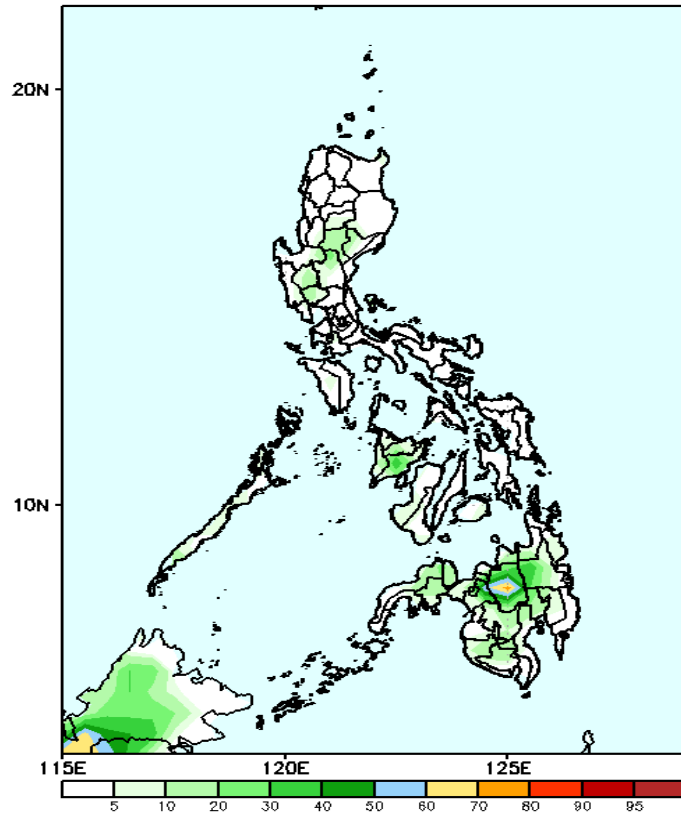


Exceedance Probability > 100/150/200 mm



Week 1: Oct 4-10, 2024

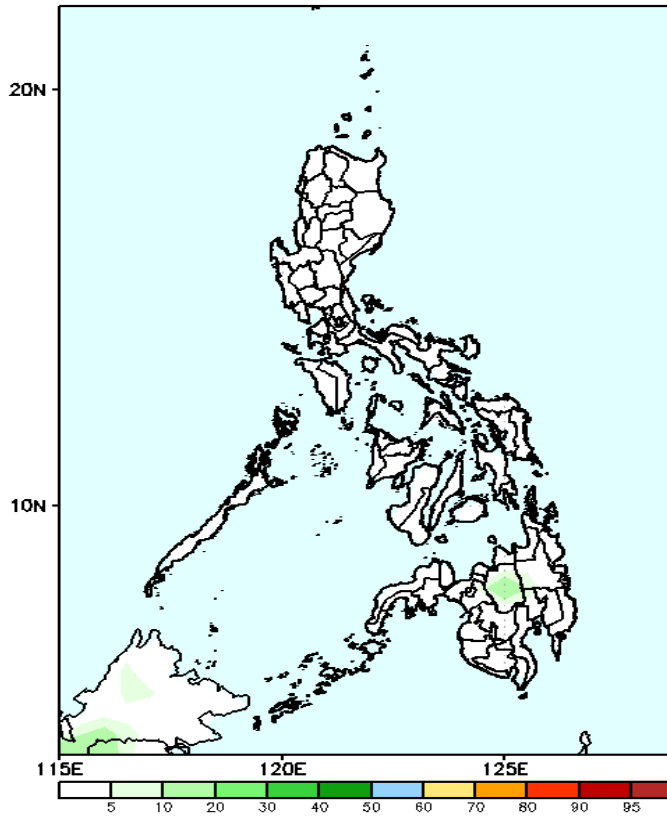
GEFS Week-1 Exceedance Prob. > 100mm
Valid: 20241004 - 20241010



Probability to Exceed 100mm

- Low to moderate over Bukidnon;
- Low over the rest of the country.

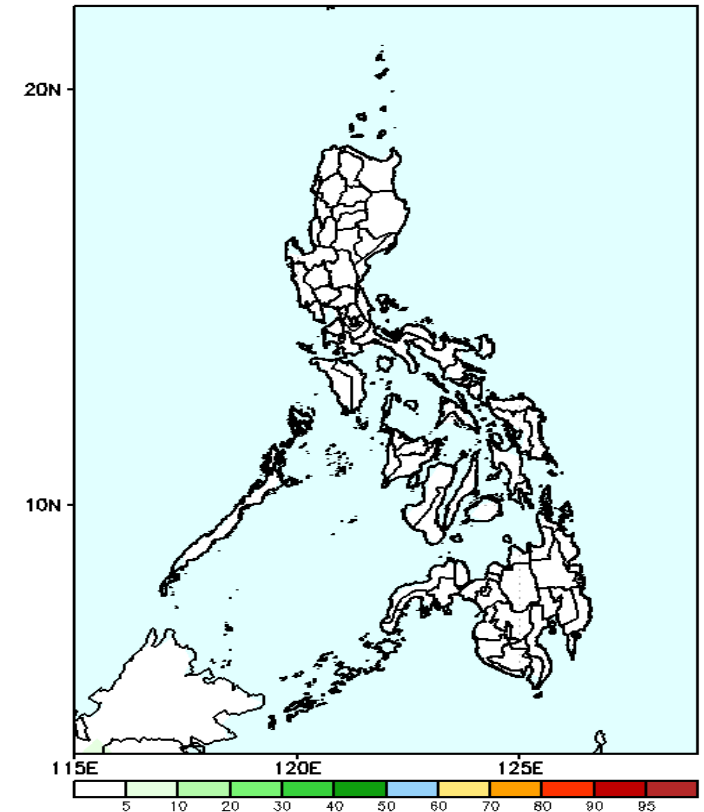
GEFS Week-1 Exceedance Prob. > 150mm
Valid: 20241004 - 20241010



Probability to Exceed 150mm

- Low across the country.

GEFS Week-1 Exceedance Prob. > 200mm
Valid: 20241004 - 20241010



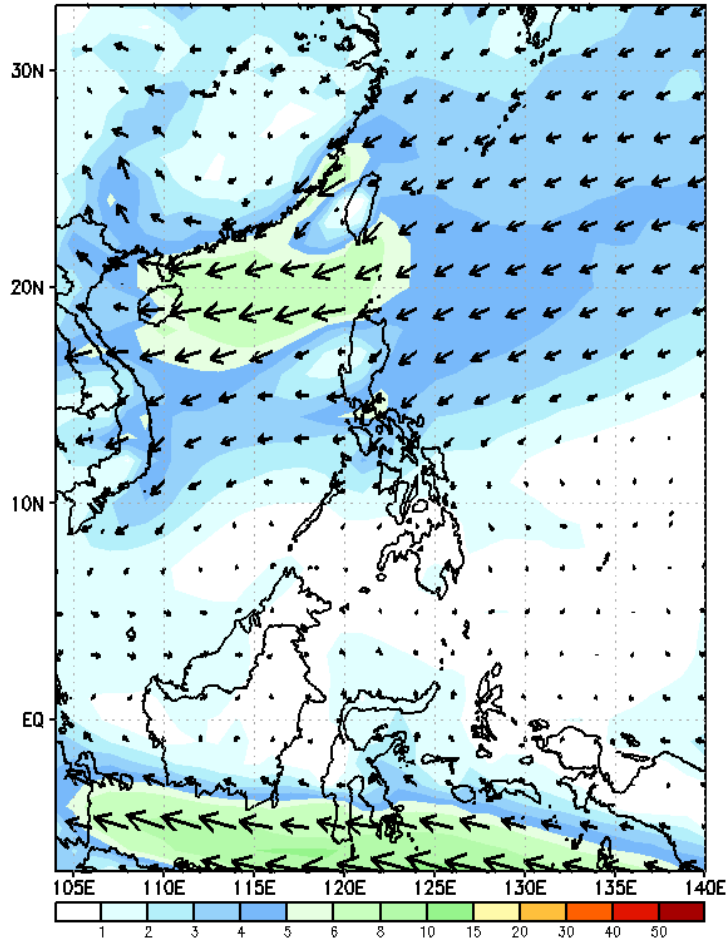
Probability to Exceed 200mm

- Low across the country.

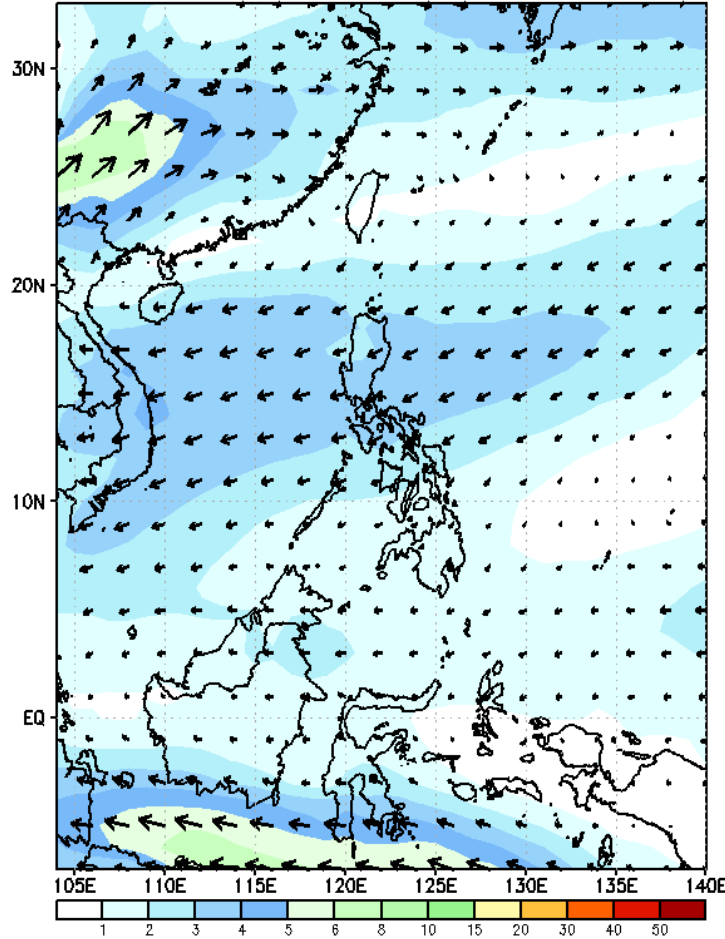
GEFS Week-2 Wind Forecasts:

Week 2: Oct 11-17, 2024

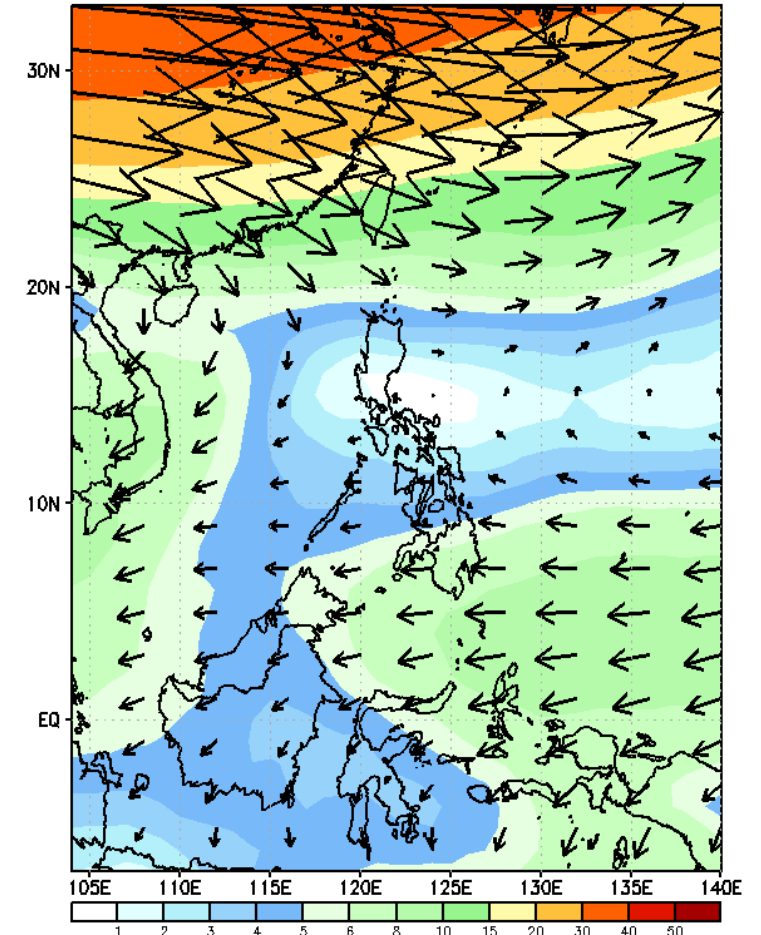
GEFS Week-2 850-hPa Wind Total
Valid: 20241011 - 20241017



GEFS Week-2 700-hPa Wind Total
Valid: 20241011 - 20241017

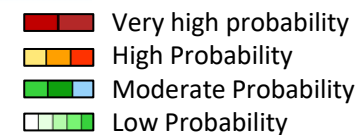


GEFS Week-2 200-hPa Wind Total
Valid: 20241011 - 20241017



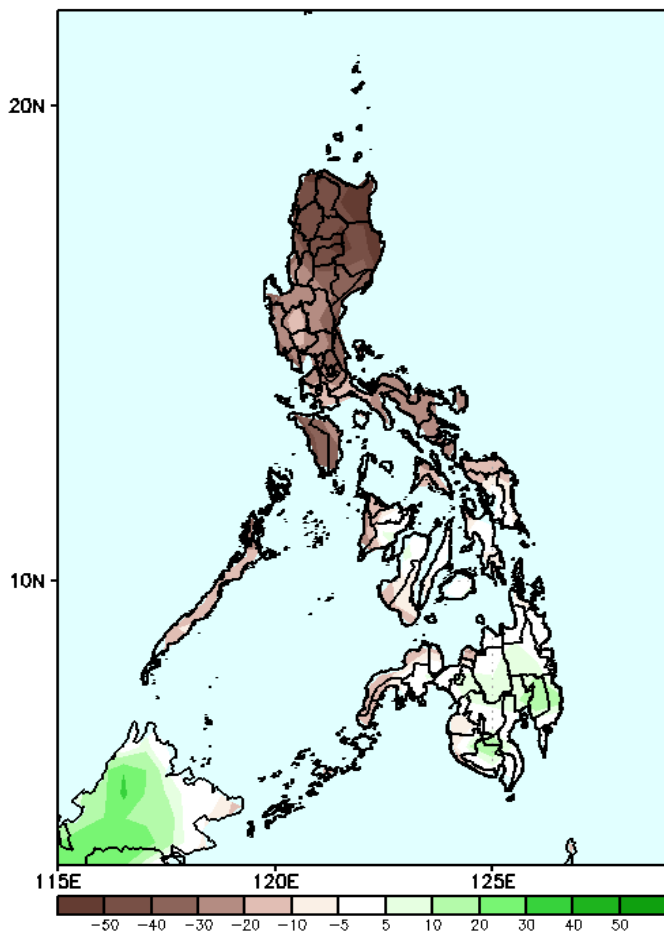
Easterlies affecting most parts of the country.

Precipitation Anomaly and Exceedance Probability > 25/50 mm



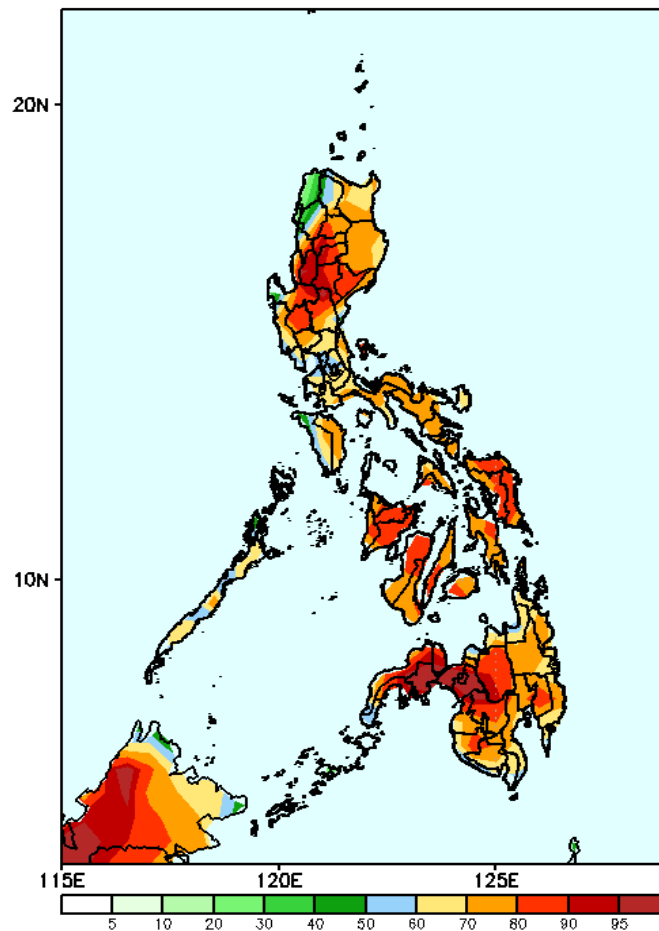
Week 2: Oct 11-17, 2024

GEFS Week-2 Precip Anomaly
Valid: 20241011 - 20241017



Rainfall deficit of 10-60mm is likely over most parts of the country except in some areas in southern Mindanao where there is 10-20mm increase of rainfall.

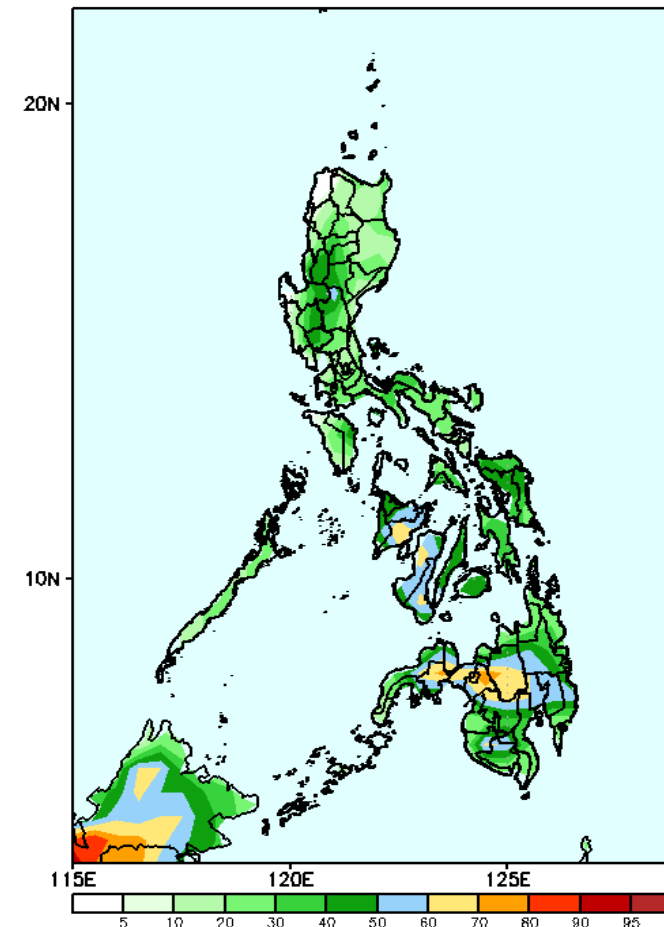
GEFS Week-2 Exceedance Prob. > 25mm
Valid: 20241011 - 20241017



Probability to Exceed 25mm

- High to very high over most of the country.
- Moderate to high over Ilocos Norte, Apayao, Kalinga, and Occ. Mindoro.

GEFS Week-2 Exceedance Prob. > 50mm
Valid: 20241011 - 20241017



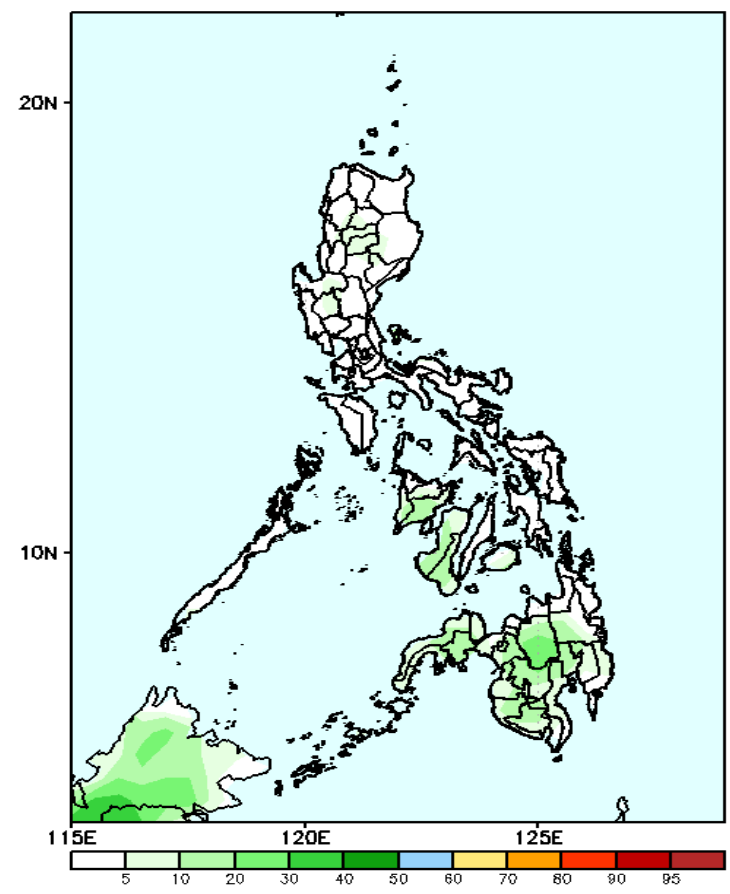
- Moderate to high over Western Visayas, NIR, central part of Mindanao, Lanao Provinces, eastern section of Zamboanga Peninsula and some parts of Sultan Kudarat and South Cotabato;
- Low to moderate over the rest of the country.

Exceedance Probability > 100/150/200 mm

- Very high probability
- High Probability
- Moderate Probability
- Low Probability

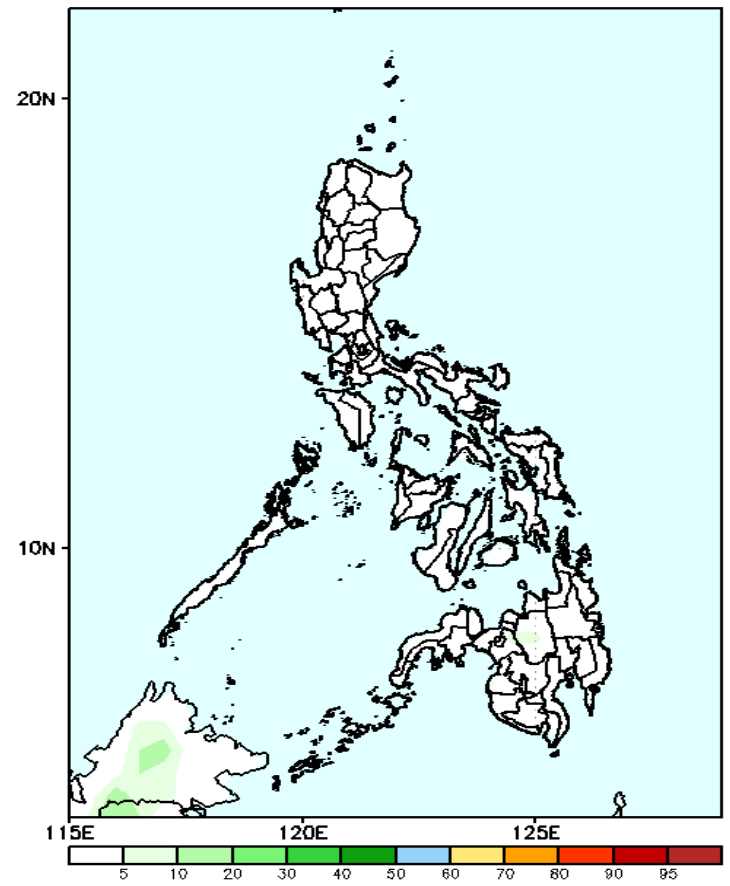
Week 2: Oct 11-17, 2024

GEFS Week-2 Exceedance Prob. > 100mm
Valid: 20241011 - 20241017



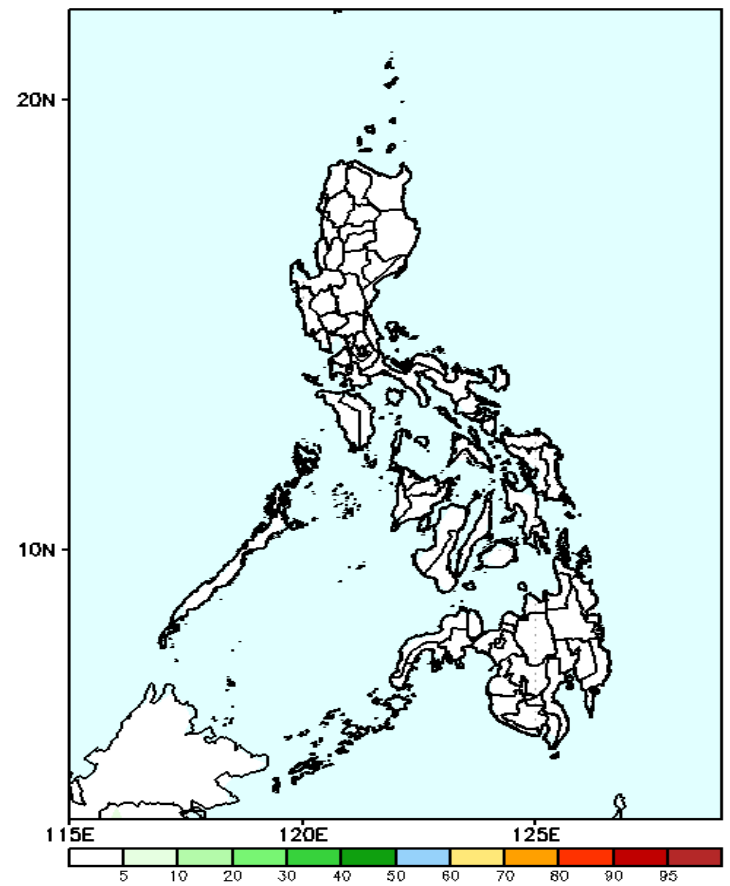
Probability to Exceed 100mm
• Low across the country.

GEFS Week-2 Exceedance Prob. > 150mm
Valid: 20241011 - 20241017



Probability to Exceed 150mm
• Low across the country.

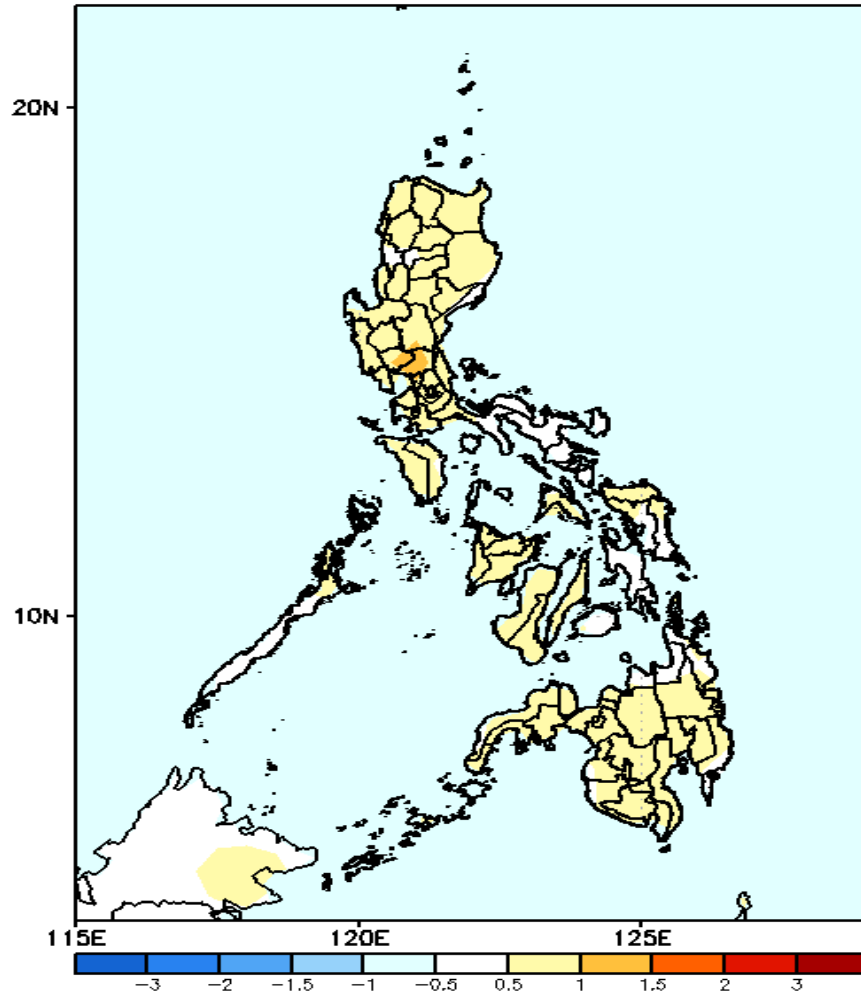
GEFS Week-2 Exceedance Prob. > 200mm
Valid: 20241011 - 20241017



Probability to Exceed 200mm
• Low across the country.

GEFS Week-1 & 2 Forecasts: T2m Anomaly

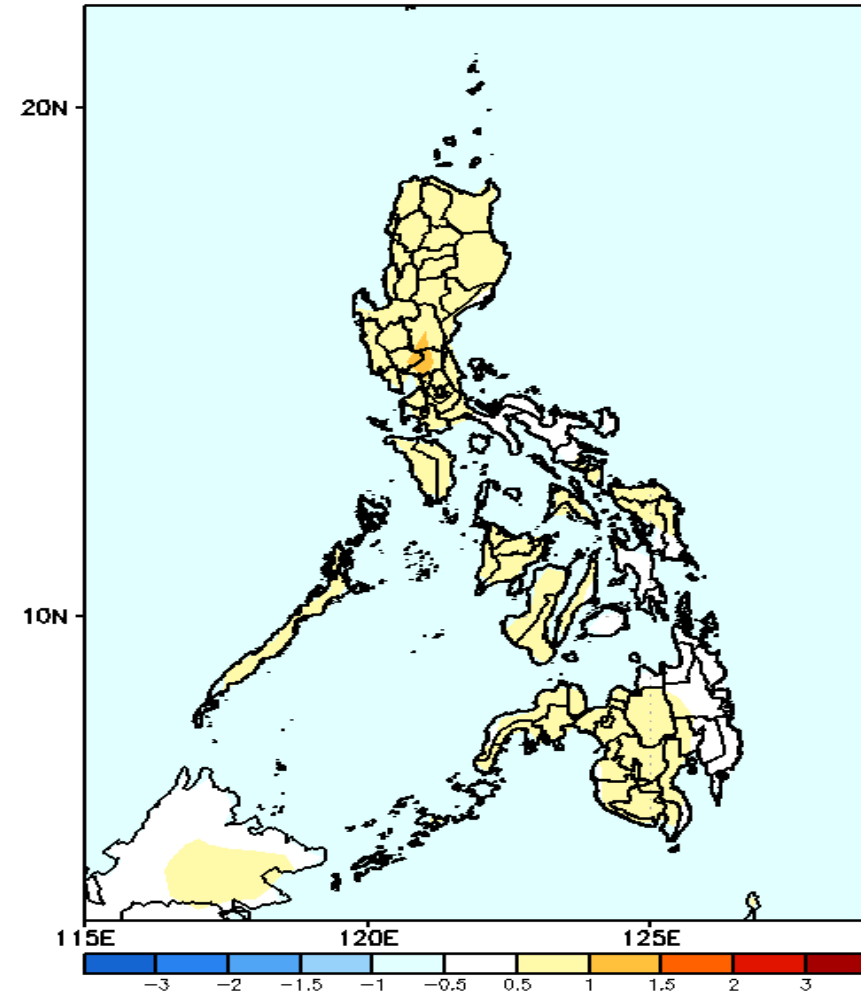
GEFS Week-1 T2m Anomaly
Valid: 20241004 – 20241010



2m Temperature Week 1: Oct 4-10, 2024

Near to slightly warmer than average surface air temperature will likely be experienced in most parts of the country.

GEFS Week-2 T2m Anomaly
Valid: 20241011 – 20241017



2m Temperature Week 2: Oct 11-17, 2024

Near to slightly warmer than average surface air temperature will likely be experienced in most parts of the country.

